

# ALASKA DIVISION OF HOMELAND SECURITY & EMERGENCY MANAGEMENT



## Daily Situation Report 25-364 • December 31, 2025

Toll-Free 1.800.478.2337

Anchorage Area 907.428.7000

SEOC 907.428.7100

<b><u>SEOC Preparedness Level</u></b>  Level 1-Routine Operations	  <a href="http://ready.alaska.gov">http://ready.alaska.gov</a>	<b><u>Alaska Military Installation Force</u></b>  <b><u>Protection Level:</u></b> FPCON Bravo
<b><u>NTAS Bulletin</u></b> There are no current advisories <a href="https://www.dhs.gov/national-terrorism-advisory-system">https://www.dhs.gov/national-terrorism-advisory-system</a>	<b><u>Maritime Security (MARSEC)</u></b> Level:1 Minimum Appropriate Security Measures	

(Significant changes from previous situation reports are red.)

### **Significant Issues:**

#### **Juneau Avalanche Potential:**

SEOC was contacted by the City and Borough of Juneau (CBJ) yesterday afternoon regarding significant avalanche potential and current mitigation plans in place.

SEOC attended a morning brief this morning with CBJ and will continue to support the community's efforts and needs throughout the hazard period. No report of active avalanches thus far.

#### **West Coast Blizzard:**

Recent winter weather across the Y-K Delta impacted power and water generation in multiple villages. SEOC is working with DOT&PF, ANTHC, YKHC, AVEC, AEA and DEC to support these communities.

#### **Tatitlek Water Treatment Plant:**

The SEOC received word that the community of Tatitlek had identified a frozen intake and impoundment of the community's water supply. Crews are currently attempting to recover the line to restore flow to the treatment plant. The SEOC is coordinating with ANTHC, DEC and the village of Tatitlek to identify any support needs.

#### **Southeast Storms:**

Significant storms continue to impact the panhandle of the state with heavy snow, increasing risk for avalanches in the north. **Flood Advisories have been lifted for the south.** See weather below for more details.

**Matanuska-Susitna Windstorm:**

Winds died down significantly yesterday in much of the valley. With the windstorm cycles expected to continue, SEOC is in regular contact with the Mat-Su Borough.

**Unalaska Blizzard:**

Impacts from a strong winter storm beginning on December 26 caused damage to the airport runway in Unalaska. Communications were compromised when a fiber optic cable supplying the island with internet and cellular service was also damaged. The SEOC is coordinating with DOT&PF and the City of Unalaska to assess damages. **The airport has reopened as of yesterday morning.**

**Division of Homeland Security and Emergency Management Public Information:**

For current press releases, see: <https://ready.alaska.gov/PublicInformation/PressReleases>

**Department of Health (DOH):**

For current information, see: <https://health.alaska.gov/en/>

**Travel Alerts and Conditions:**

**Thane Road in Juneau remains closed due to high avalanche hazard. Closure will be re-evaluated on Wed 12/31 at noon.**

For current driving conditions, dial 511 or visit: <https://511.alaska.gov/>

**Barry Arm Landslide / Tsunami Risk:**

For the latest information on the Barry Arm Landslide and Tsunami risk, click here: <https://dggs.alaska.gov/hazards/barry-arm-landslide.html>

**Earthquakes:**

United States Geological Service (USGS) Earthquake Information:

<https://www.usgs.gov/programs/earthquake-hazards>

National Tsunami Warning Center: <https://tsunami.gov/>

**Alaska Volcanoes:**

**Great Sitkin** Alert Level: **Watch** and Aviation Color Code: **Orange**

**Shishaldin** Alert Level: **Advisory** and Aviation Color Code: **Yellow**

For Alaska Volcano updates, go to: <https://www.avo.alaska.edu/>

**Air Quality Index (AQI) Advisories:**

For the most up-to-date Air Quality Index Advisories:

<https://dec.alaska.gov/Applications/Air/airtoolsweb/Advisories>

**Spills of Oil and Hazardous Substances:**

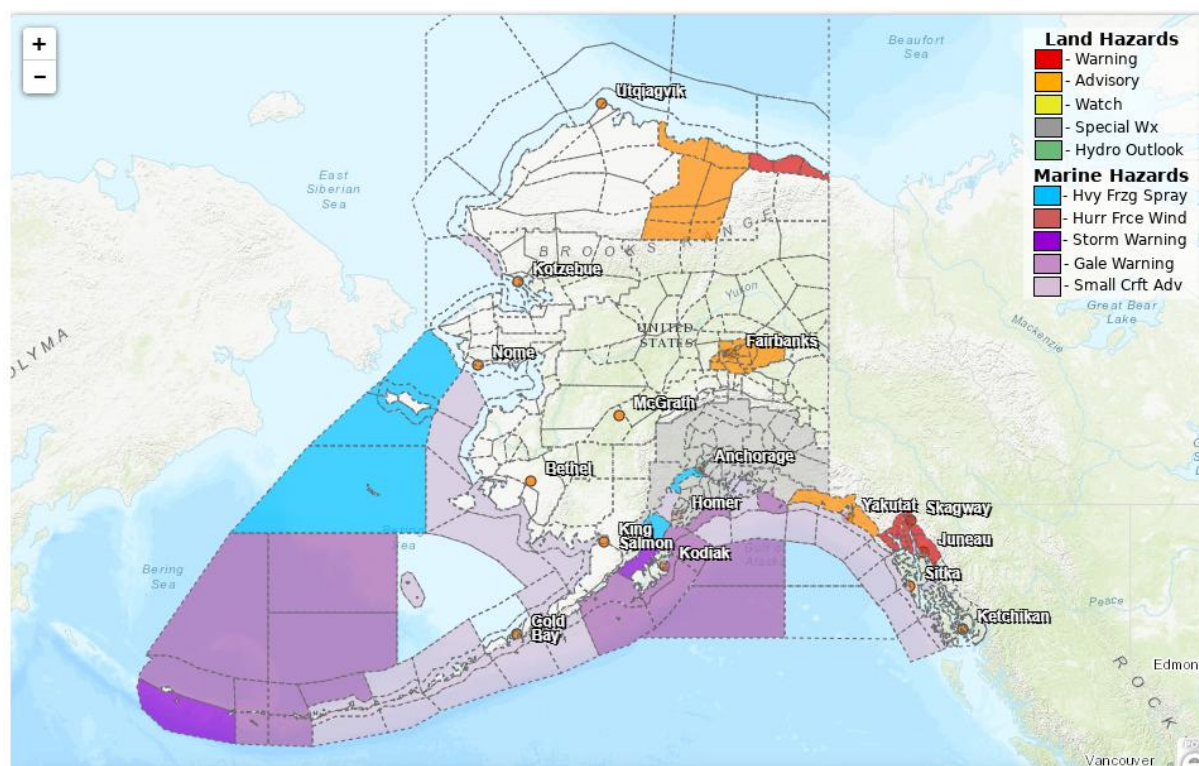
The Alaska Division of Environmental Conservation (ADEC) Spill Prevention and Response page is located at: <https://dec.alaska.gov/spar/ppr/spill-information/response/>

**Alaska Cyber Security Information:**

State Employees may sign up for cybersecurity notifications and alerts at:

<https://oit-int.alaska.gov/security/>

## Significant Weather:



**Winter Weather Advisory in effect for the Central Beaufort Sea Coast, Central Arctic Plains and Central Brooks Range – until 9 AM Thursday.**  
**City and Borough of Yakutat – until 9 PM this evening.**

**Blizzard Warning in effect for the Eastern Beaufort Sea Coast from 6 PM this evening to 9 PM Thursday.**

**Cold Weather Advisory in effect for Upper Chena River Valley; Tanana Flats; Eielson AFB and Salcha; Goldstream Valley and Nenana Hills; Chatanika River Valley; Two Rivers; Fairbanks Metro Area - Very cold wind chills as low 60 below, until 3 AM Monday.**

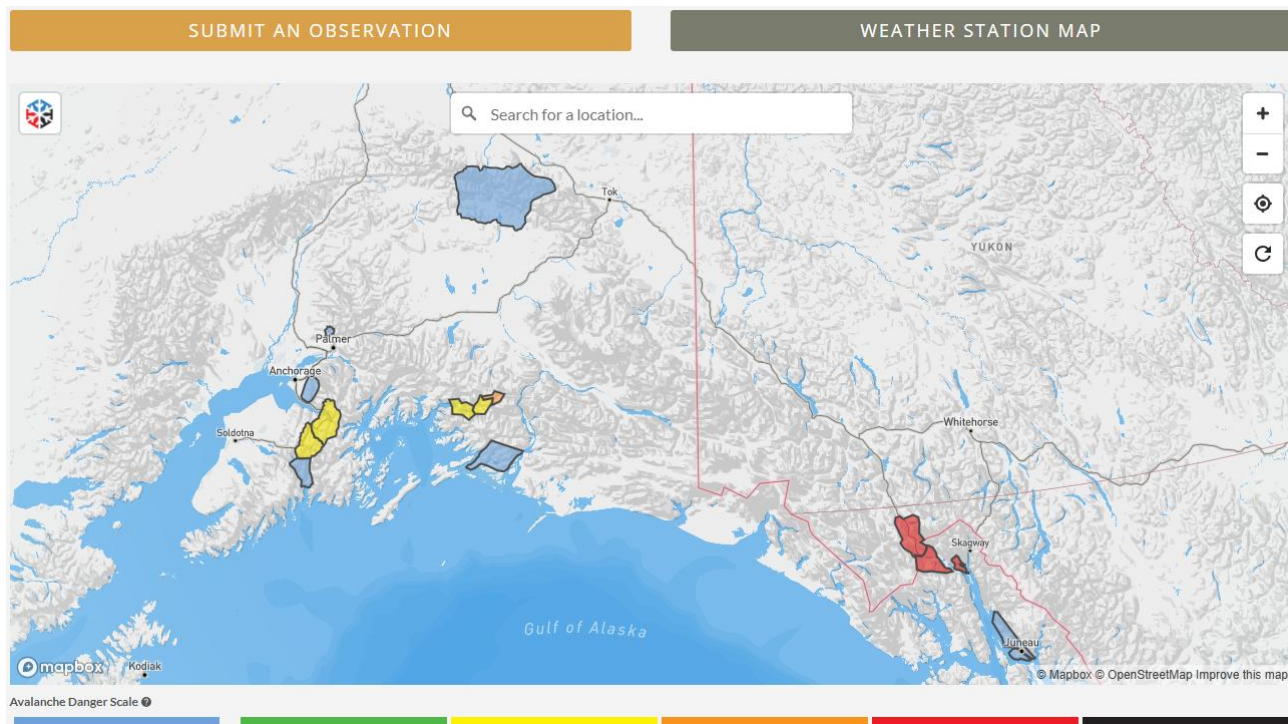
**Winter Storm Warning in effect for Municipality of Skagway, Haines Borough and Klukwan; Glacier Bay and City and Borough of Juneau - until Noon today.**

**Special Weather Statement in effect for:**  
**RETURN OF VERY COLD TEMPERATURES LATER THIS WEEK**

Clearing skies and a cooling airmass will bring well below normal temperatures beginning Thursday, with readings continuing to fall through the weekend. Temperatures are expected to vary significantly over short distances due to wind and terrain effects, with the coldest conditions occurring in low-lying, wind-sheltered areas. Low temperatures in the **Copper Valley** could reach -35F to -45F with wind chill values near or below -55F. **The Susitna Valley** could reach -35F in low laying areas like **Willow**. For **the Matanuska Valley, Anchorage and Kenai Peninsula**, low temperatures between -5F and -25F are expected. High temperatures may remain below 0F by the weekend. Winds will keep temperatures warmer through **the Prince William Sound communities**, but wind chill values between -10F and -25F are expected.

**For more information, go to <https://www.weather.gov/arh>**

## **Avalanche Conditions:**



**Hatcher Pass** – Moderate above 3,500'; Low above 2,500', No rating below 2,500'

**Chugach State Park** – Be aware of freshly wind drifted surface snow

**Turnagain Pass and Girdwood** – Moderate above 1,000'; Low below treeline

**Summit Lake** – Moderate above 1,000'; Low below treeline.

**Seward and Lost Lake** – No forecast available due to conditions

**Valdez:**

**Maritime** – Moderate above 1,500 ft.

**Intermountain** – Moderate at all elevations.

**Continental** – Considerable above 2,000ft and Moderate below.

**Haines: Chilkat Pass, Transitional, Lutak** – High at all elevations for each area. Natural avalanches expected. Avoid avalanche paths and runout zones.

**Juneau: Douglas Island** – High at all elevations. Natural avalanches reported yesterday.

For more information and the most current avalanche conditions, go to <https://alaskasnow.org>

**The Next Situation Report** will be on **January 2, 2026**. A significant change in situation or threat level will prompt an interim report. This report is posted on the internet at <https://ready.alaska.gov/sitrep>.

To register for email distribution, go to: <http://list.state.ak.us/mailman/listinfo/dhsem.situation.report>. Direct questions regarding this report to the SEOC at 907-428-7100 or [seoc@alaska.gov](mailto:seoc@alaska.gov).